

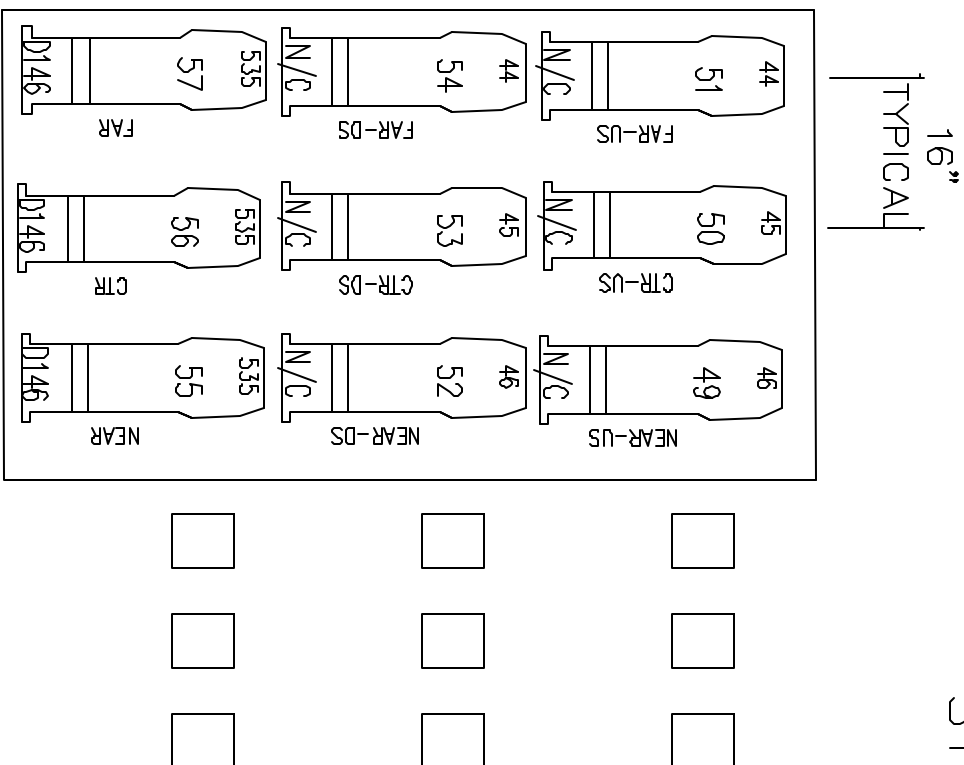
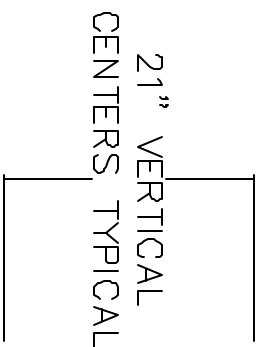
STAGE LEFT

STAGE RIGHT

NOTE:

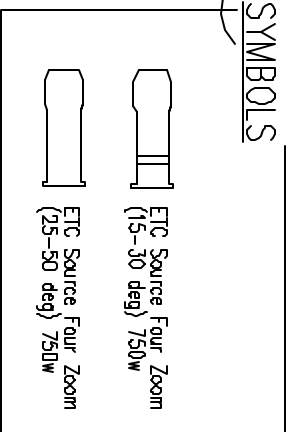
HANG AS HIGH AS POSSIBLE

Notes:
 *Need 4 dimmable circuits.
 *Fill in house dimmer number in boxes provided.

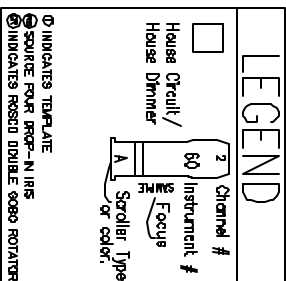


RED MARKINGS

SYMBOLS



LEGEND



BOX BOOM SR

NOT TO SCALE

VER. "A"

AIDA - 1st NATIONAL TOUR
 Lighting Designer: Natasha Katz
 Associate LD: Edward Pierce
 Production Electrician: Robert Fehribach
 Head Electrician: Eric Rimes (312-953-0813 cell)